



MINISTERE DES MINES

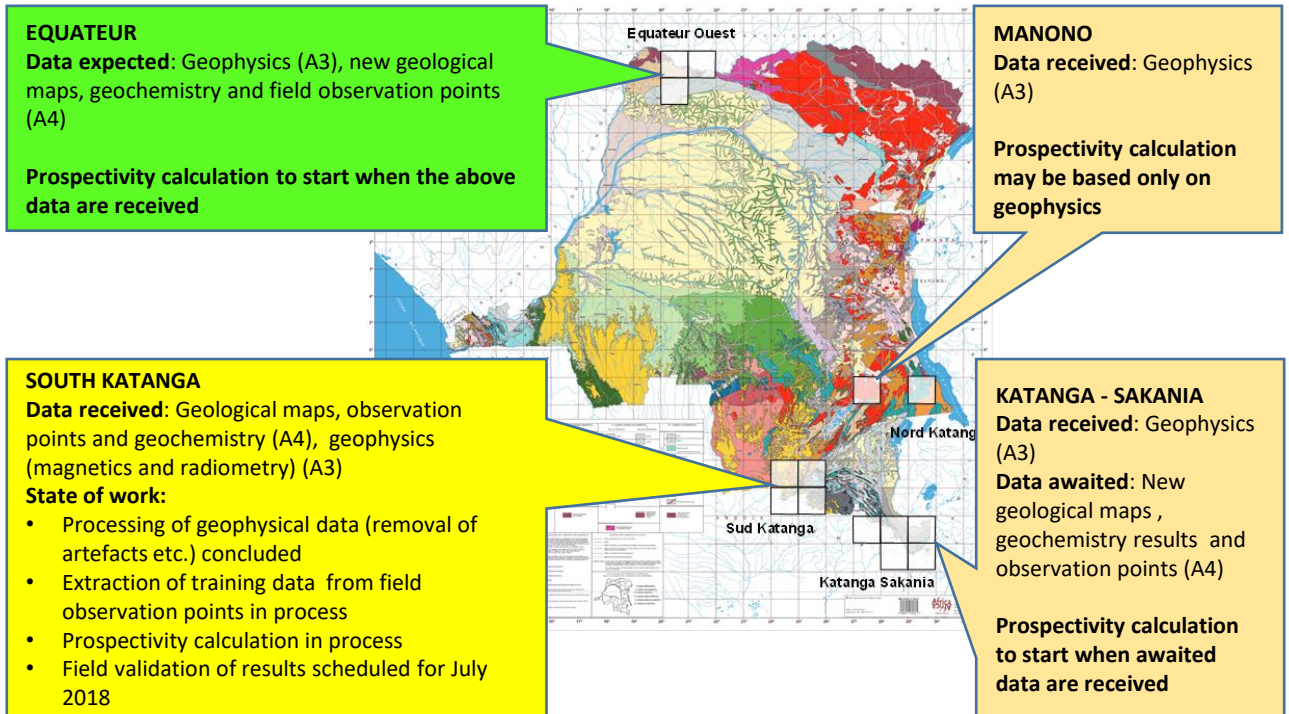
PROMINES – Work Group A5

Study of Test Zones for Prospectivity Analysis using Geological, Geochemical and Geophysical GIS Data and Artificial Neural Networks for Selected Sites

1) Objectives

- Integrate all available data: geological, geochemical, geophysical and remote sensing data and known occurrences to create Mineral Predictive Maps
- Apply knowledge and data driven methods to define targets
- Training of staff in Mineral Predictive Mapping using advangeo® Prediction software

2) Current State of Data Availability and Work (June 2018)

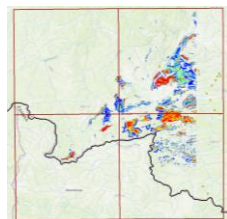


3) Project team:

5 geologists, 1 geo-mathematician, 1 programmer, 1 database developer, 1 cartographer, homologue geologists, support staff

4) Work carried out to date

- Development of targeting strategy
- Processing of aerial geophysics and removal of artefacts
- Generation of training points for application of artificial neural network with advangeo® Prediction Software (review of field observation points, artisanal mines on satellite images)
- Test model run for South Katanga



5) Working steps ahead

- Mineral predictivity analysis and creation of predictive maps in South Katanga area (ongoing)
- Field validation of first results in South Katanga area (July 2018)
- Processing of incoming data for all other test zones to carry out prospectivity analysis
- Creation and ranking of targets
- Training with staff of PROMINES, Cadastre Minier
- Recommendation of further work in the defined targets

Contact: Beak Consultants GmbH
 andreas.knobloch@beak.de
 peter.bock@beak.de

